

New generation output software with 16 bit rendering (bundled item)



High performance RIP software designed to fully enable all advanced features of JV5 series printer



[8 bit rendering]
Tone jumps are likely to occur



[16 bit rendering]
Smooth gradation without tone jumps

16 bit rendering eliminates tone jumps and produces fine color reproduction. Different images can be freely nested on the RIP. The web update function has been newly added to RasterLink Pro5 to easily achieve both software update and profile download.

RasterLink Pro5 SG

■JV5 series specification

Item	Specifications		
	JV5-130S	JV5-160S	
Print Head	On-demand Piezo head (Array of 4 staggered print heads)		
Maximum printing width	1,365 mm (53.7")	1,620 mm (63.7")	
Printing resolution	540, 720, 1440 dpi		
Printing mode (Scan x Feed)	720 × 540 dpi : Bi-directional & uni-directional 540 × 900 dpi : Bi-directional & uni-directional 540 or 720 × 720 dpi : Bi-directional & uni-directional 540 or 720 × 1,080 dpi : Bi-directional & uni-directional 720 × 1440 dpi : Bi-directional & uni-directional 1440 × 1440 dpi : Bi-directional & uni-directional		
Ink	Kind	Exclusive solvent ink : HS ink, Eco-HS1 ink, SS21 ink, ES3 ink	
		Exclusive aqueous pigment ink : Eco-PA1 ink	
		Exclusive dye-sublimation ink : Sb52 ink, Sb53 ink	
Supply	Uninterrupted ink supply system		
	capacity	6 color mode : 440 ml cartridge × 2 / color, 880 ml / color 4 color mode : 440 ml cartridge × 4 / color, 1,760 ml / color	
Media specification	Size	Max. width 1,375 mm (54.13")	Max. width 1,630 mm (64.17")
		Min. width 297 mm (11.6")	Min. width 297 mm (11.6")
	Thickness	1.0 mm or below	
	Roll weight	38 kg (83.7 lbs.) or below	
	Printing surface	Face out	
Media cutting	Cutting in Y direction by cutter at the head		
	Media heater	3 stage intelligent heater (PRE / PRINT / POST)	
Media take-up device	Roll take-up device (standard) , inside/outside selectable		
Nozzle checking unit (NCU)	Laser system (Class 1 or below)		
Print gap	1.5 mm to 7 mm, step-less & user setting, (automatic detection of media thickness)		
Interface	USB 2.0		
Applicable standard	VCCI Class A, FCC Class A, UL 60950, CE Marking (EMC Directive, Low Voltage Directive) , CB Report, RoHS		
Power source specification	AC 200 V to 240 V ± 10%, 50/60 Hz ± 1 Hz 15 A or below		
Power consumption	3,600 VA or below		
Operating environment	Usable temperature: 20 °C to 35 °C, Humidity: 35% to 65%RH, Non-condensing		
Dimensions (W) × (D) × (H)	2,860 × 1,050 × 1,540 mm	3,120 × 1,050 × 1,540 mm	
	(112.6" × 41.4" × 60.7")	(122.9" × 41.4" × 60.7")	
Weight	324 kg (713.7 lbs.) or below	333 kg (733.5 lbs.) or below	

■Option and supply

Item	Item No.
HS ink	440ml SPC-0473 Y/M/C/K/Lm/Lc
	2L * SPC-0589 Y/M/C/K/Lm/Lc
Eco-HS1 ink	440ml SPC-0538 Y/M/C/K/Lm/Lc/Lk
	2L * SPC-0587 Y/M/C/K/Lm/Lc/Lk
SS21 ink	440ml SPC-0501 Y/M/C/K/Lm/Lc
	2L * SPC-0588 Y/M/C/K/Lm/Lc
ES3 Eco Solvent ink	440ml SPC-0440 Y/M/C/K/Lm/Lc
Eco-PA1 pigment aqueous ink	220ml SPC-0537 Y/M/C/K/Lm/Lc/Lk
Sb52 Dye sublimation ink **	440ml SPC-0584 NK/K/RK/NRK/BB/LBB/BLM/Y/LBL/LM
	2L * SPC-0585 NK/K/RK/NRK/BB/LBB/BLM/Y/LBL/LM
Sb53 dye sublimation ink	440ml SB53-BL/M/Y/K-44
	2L * SB53-BL/M/Y/K-2L
Solvent wiper kit	10 pcs SPA-0125
Waste ink bottle 4L	1 pc SPA-0128
Cutter blade assembly	1 pc SPA-0126
Cleaning solution MS2/ES3/HS kit200	1 pc SPC-0369
MS cleaning cartridge	220ml SPC-0294
JV5-130S AMF unit	OPT-J0162
JV5-160S AMF unit	OPT-J0161
JV5-130S/160S MBIS (Mimaki Bulk Ink System)	OPT-J0306

* 2 liter ink packs can be used with bulk ink system

** Sb52 ink has 4types of black ink: Normal black(NK), Deep black(K), Reddish black(RK) and Normal Reddish black(NRK).

HS ink
An aggressive solvent ink which meets the needs for high scratch resistance and high-speed high density printing.

ES3 ink
Virtually odorless and user-friendly ink which does not require any special ventilation.

Eco-HS1 ink
An aggressive, yet low-odor solvent ink which has no toxic ingredients and prevents shrinkage of media (especially thin self-adhesive PVC).

Eco-PA1 ink
The microcapsule-type aqueous pigment ink provides excellent color reproducibility and reduces ink blur.

SS21 ink
This ink provides the ability of printing on various types of media with high scratch resistance. Compared to HS ink, SS21 ink would be inferior to fast drying.

Sb52 ink, Sb53 ink
Fast drying and high density ink for sublimation transfer to polyester substrates such as sportswear and soft signage.

AMF
AMF (Automatic media feeder) enables both thick and filmy media or heavy substrates to be fed and taken up with high accuracy. This ensures high quality and stable prints on a broad range of media.

MBIS
MBIS(Mimaki Bulk Ink System) enables a saving in ink costs and the inks have the same high quality features such as ink emission, stability, color gamut and reliability as Mimaki's ink cartridge system. MBIS is an eco-friendly ink system that produces less waste.



JV5-130S Maximum printing width 1,365 mm

JV5-160S Maximum printing width 1,620 mm

High-speed solvent inkjet printer with a super-wide array of 4 printing heads

JV5 Series

JV5-130S / JV5-160S

Mimaki

Aqueous pigment & dye sublimation inks are also available.

Expand your business opportunity with impressive on-demand performance and quality



MIMAKI ENGINEERING CO., LTD.

2182-3 Shigeno-otsu, Tomi-city, Nagano 389-0512, Japan
Tel: +81-268-78-2288
trading@mimaki.jp www.mimaki.co.jp

MIMAKI USA, INC.

150 Satellite Boulevard, suite A, Suwanee, Georgia 30024, U.S.A
Atlanta +1-888-530-3988 Boston +1-888-530-3986
Los Angeles +1-888-530-3987 Chicago +1-888-530-3985
www.mimakiusa.com

MIMAKI EUROPE B.V.

Stammerdijk 7E, 1112 AA Diemen, The Netherlands
Tel: +31-20-4627-640
info@mimakieurope.com
www.mimakieurope.com @MimakiEurope

DB10266-09

Unrivalled JV5 performance helps capture time-critical business and expands your opportunities.

Ultra high speed print of 58m²(624sq.ft.)/h at 540 x 720 dpi up to high quality print of 720x1440dpi at 13m²(140sq.ft.)/h.

*JV5-160S

Equipped with many new leading-edge features carefully designed from the perspective of both productivity and the highest standards of image quality.

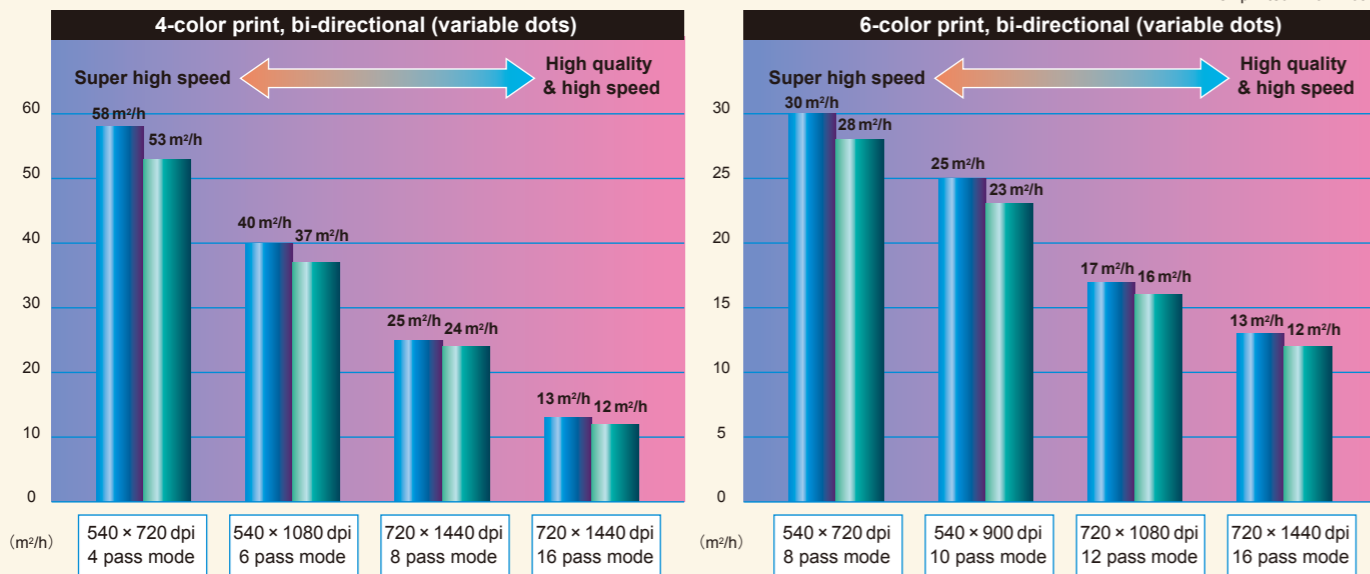
Have you ever declined valued orders that need immediate delivery? To capture as much business as possible you often need to comply with a customer's request for instant delivery. Your existing inkjet printers cannot satisfy both sufficiently high speed and image quality demands? The JV5 Series is different. It is an amazing new solvent inkjet printer offering not only unsurpassed production capacity, unattended operation efficiency but also beautiful high quality images. While maintaining your current quality you can typically shorten your job turnaround time by up to 75%. With a JV5 series printer you will no longer lose business opportunities because of an inability to provide immediate deliveries.

*Comparison with JV3 series

JV5 series combining high image quality with outstanding performance

JV5-160S JV5-130S

※When printed in full width

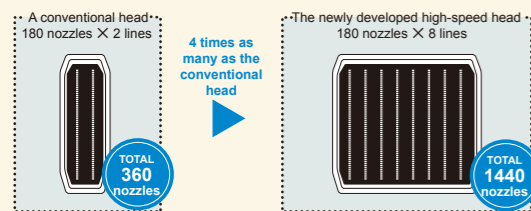


Max. 1440 dpi. Variable dot sizes are adopted.

An advanced new printer design provides both outstanding performance and exceptional image quality

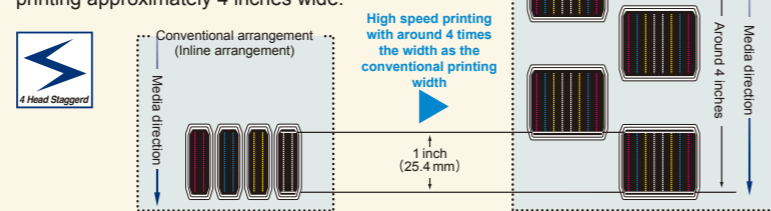
Newly developed high speed head.

Each head has 1440 nozzles arranged as 8 lines of 180 nozzles, 4 times as many as a conventional head.



4 staggered heads arrangement

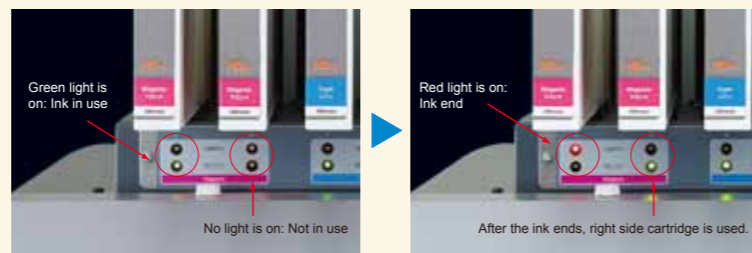
4 of the newly developed high speed heads configured in 4 staggered lines enable high speed printing approximately 4 inches wide.



Cutting edge function for high speed continuous printing

1 UISS (Uninterrupted Ink Supply System)

JV5 can utilize four cartridges per color in 4-color mode. When the ink cartridge runs out, another cartridge begins supplying ink and helps prevent running out of ink. A maximum of 1,760 ml ink per color can be loaded at one time.



5 Head height adjustment

1 UISS

3 Drying fan

2 Large heater

7 Media feed compensation

4 Heater panel

6 Automatic nozzle checking

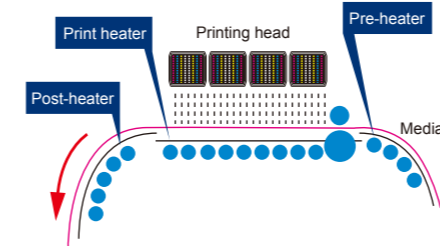
8 USB2.0 interface

9 Automatic take-up device



3 stage intelligent heater

A 3 stage intelligent heater to both enhance color development and to fix the ink by automatically heating the media and controlling its temperature is a standard feature.



2 Large heater & 3 Drying fan

Equipped with a large post-heater and drying fan, which promotes drying of the printed media at high speeds ready for re-winding.



4 Heater panel

The operating panel and heater lamp are grouped together for convenience and ease of use.



5 Head height adjustment

The thickness of the media is auto-sensed to enable the height of the head to be adjusted automatically for the correct head gap. Even when the thickness of the media is changed, printing is resumed with a constant head gap to always obtain the best printing results.



Head gap can be set step-less in 4 positions between 1.5 mm to 7 mm.

7 Media feed compensation

The media is transported evenly without being affected by the varying weight of the roll media. This eliminates any banding caused by irregular feeding of the media so maintaining the highest

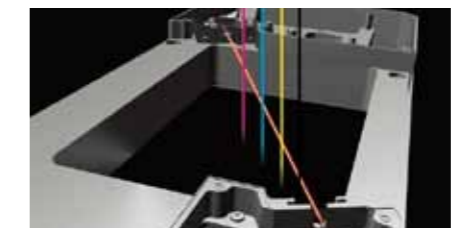
Exhaust cover

The fan and exhaust duct are designed to quickly and efficiently evacuate ink odors during printing.



6 Automatic nozzle checking

The status of ink-discharge from the printing head and any nozzle clogging is quickly detected and cleaned to reduce waste of both media and ink.



Other features

- 8 USB 2.0 interface enables high speed data transmission.
- 9 Automatic take-up device to enable continuous unattended operation.